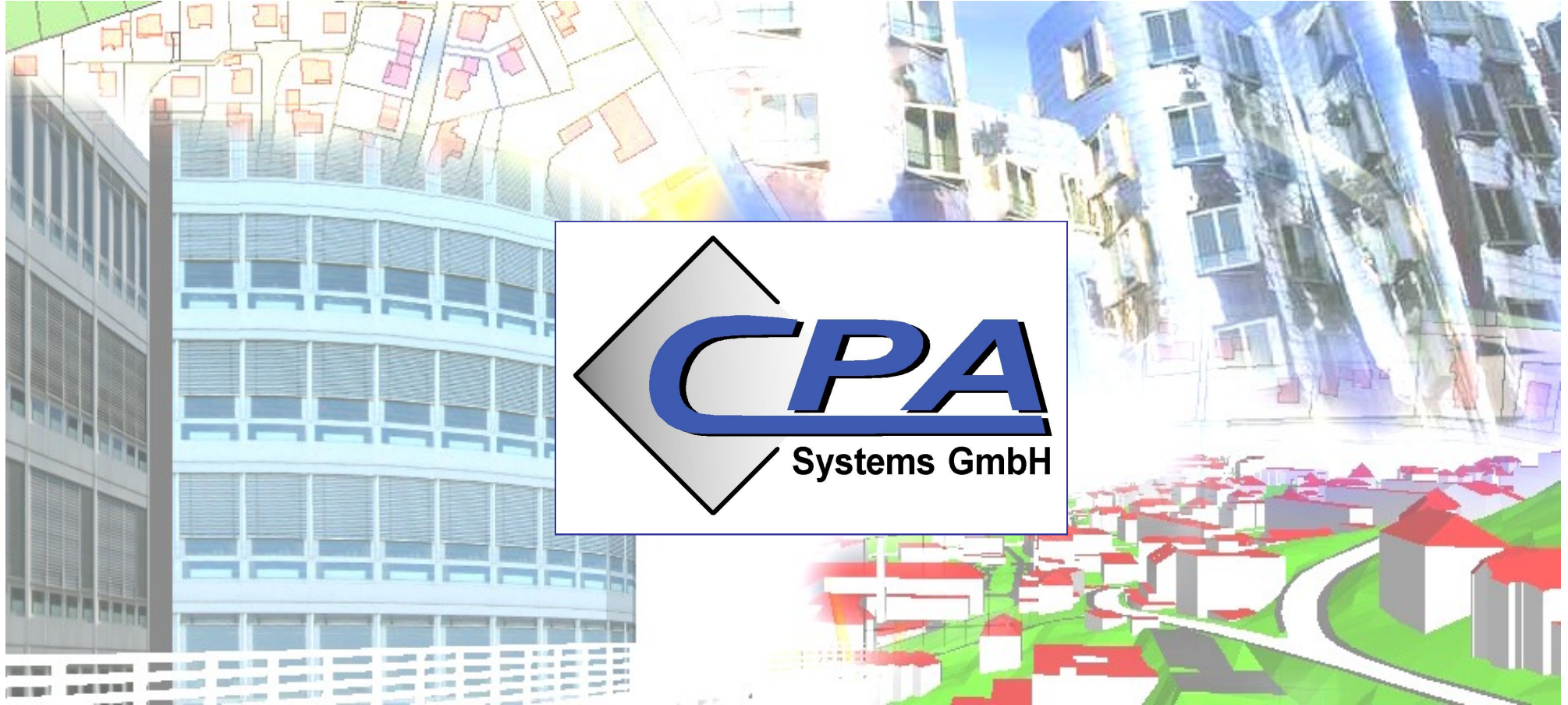
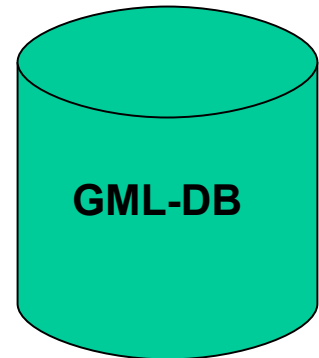
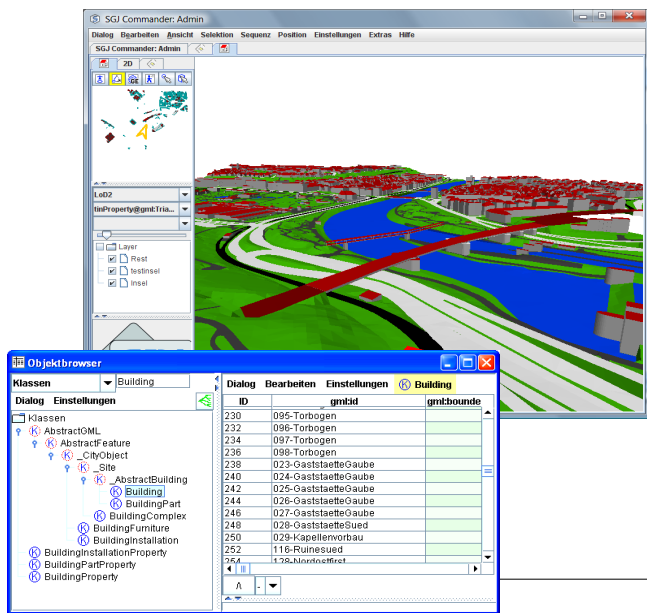
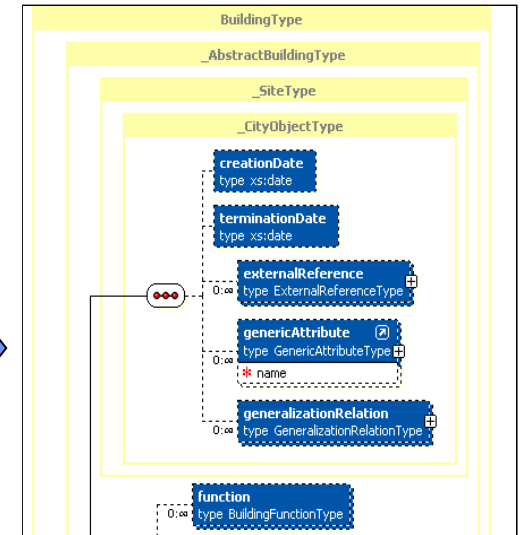
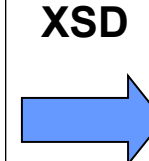
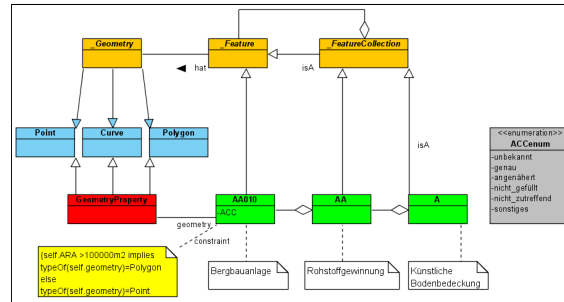
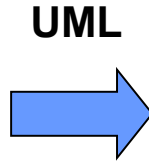
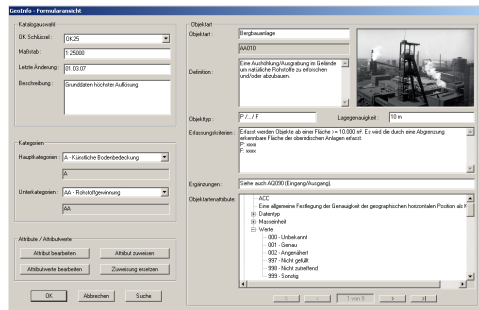


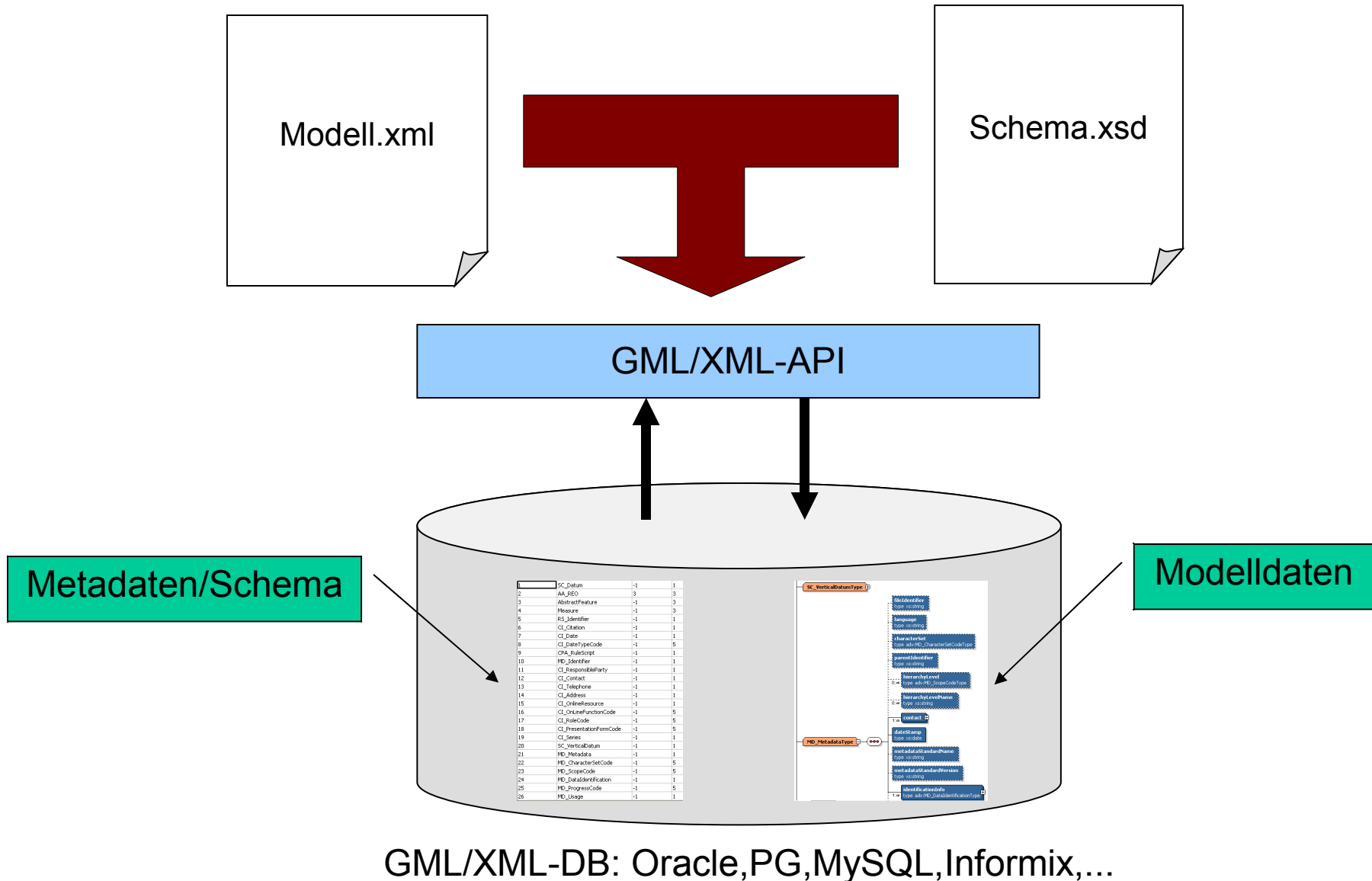
Versionierung und Varianten mit der SGJ-Technik

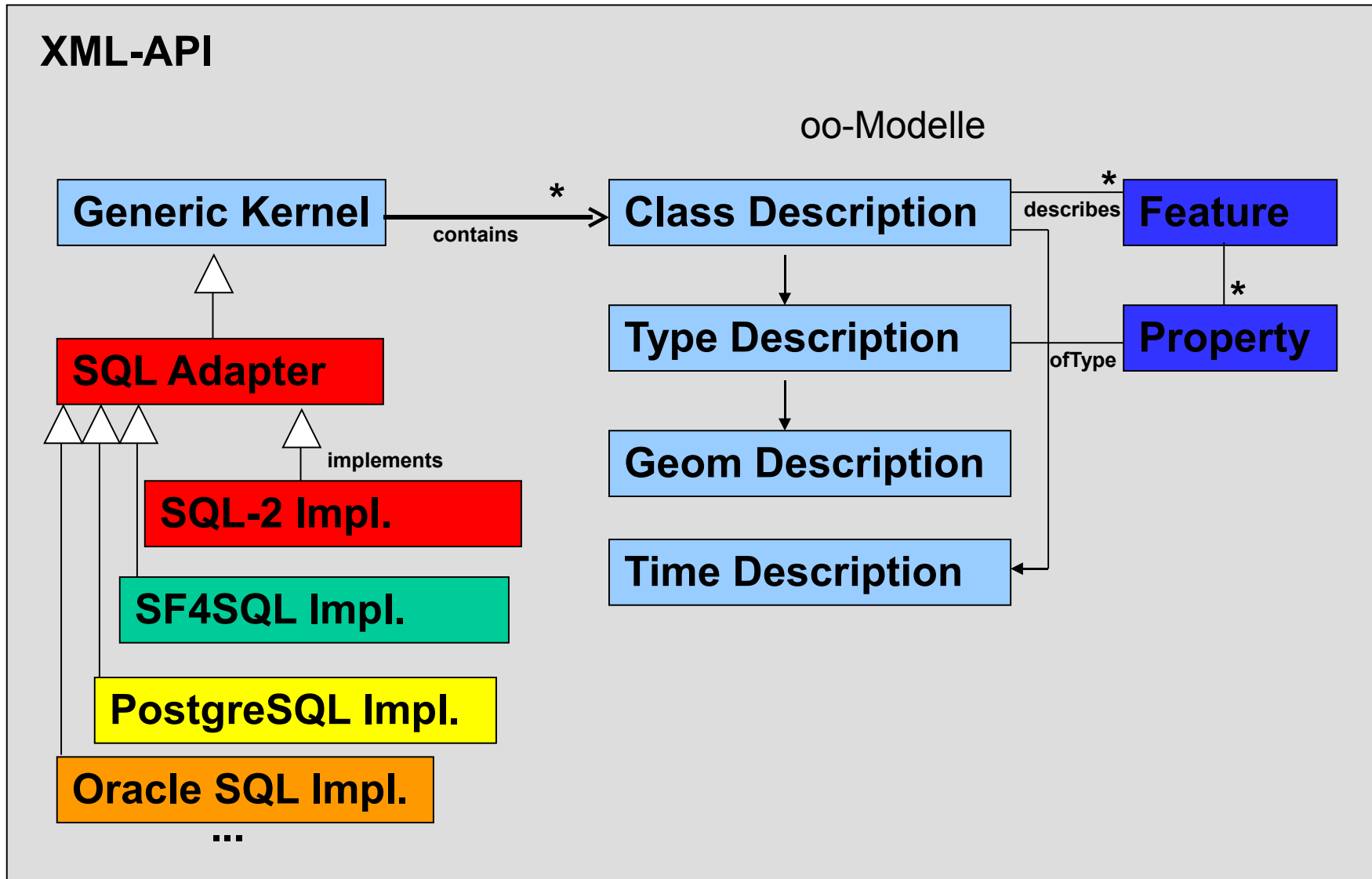


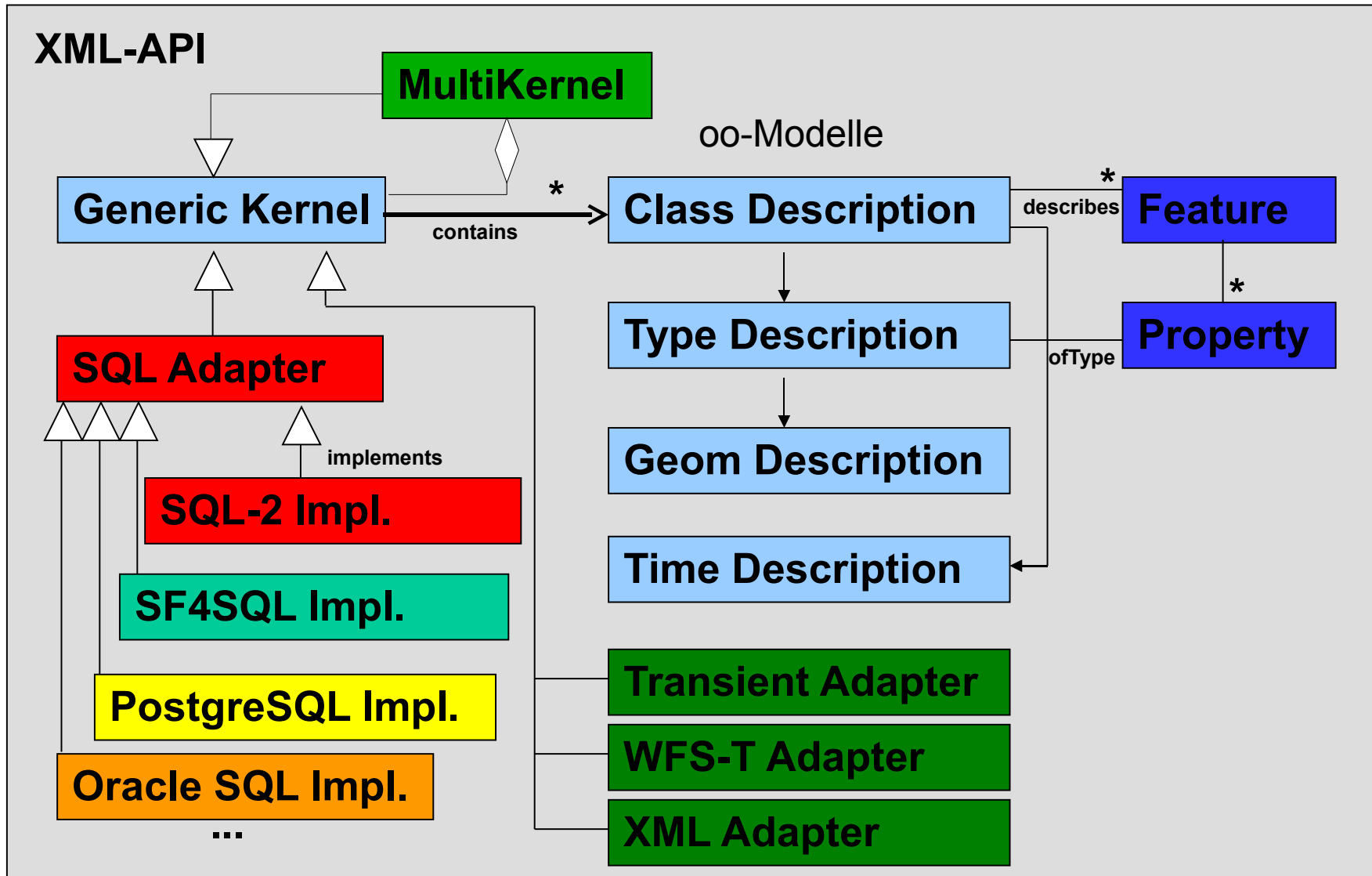
Dr.-Ing. René Thiele
thiele@supportgis.de

- Mehrdimensionale GML-Datenbank

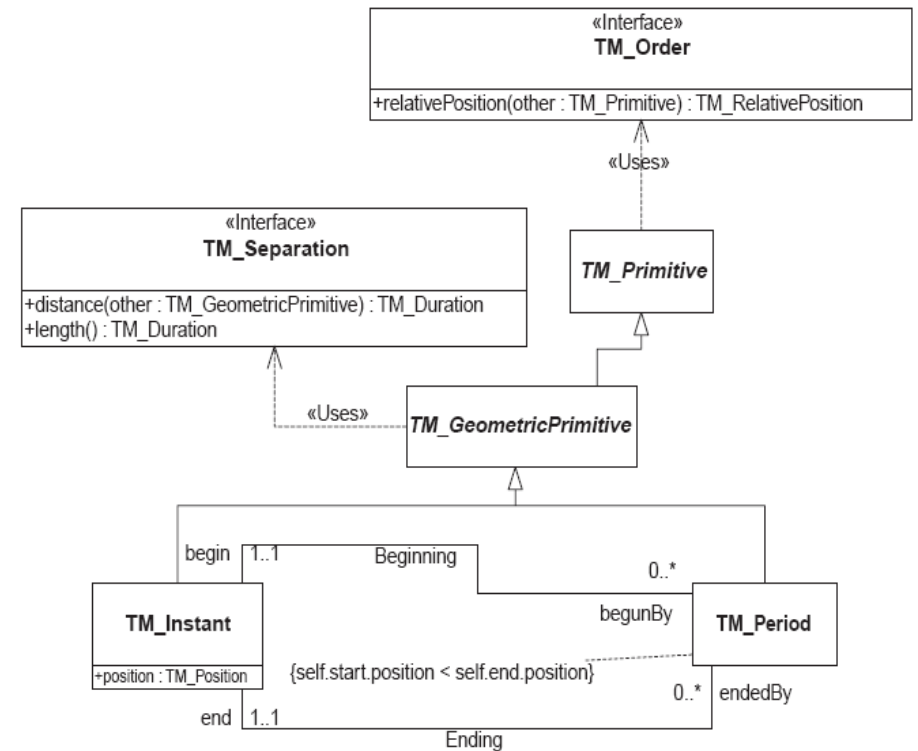
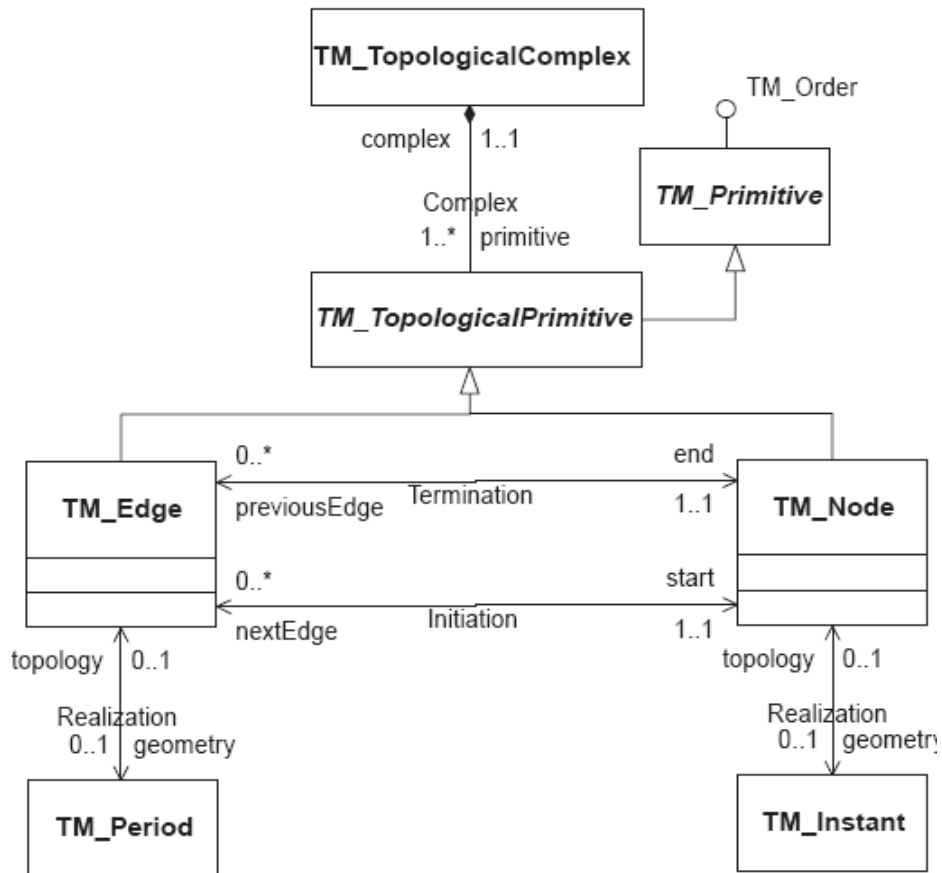








- [Temporales Schema ISO 19108](#)



- [GML-Modellierung ISO 19136](#)

- Geometrie:

- gml:TimeInstant.

- Top

-

-

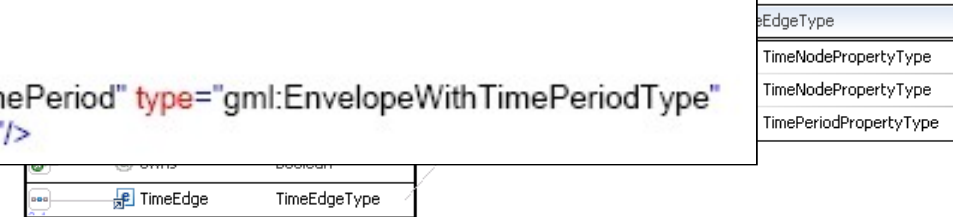
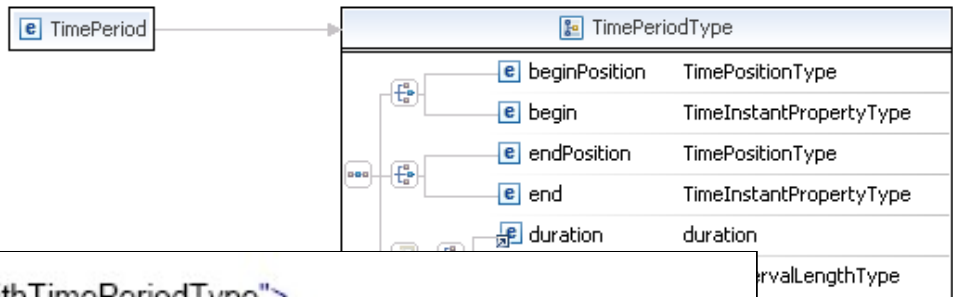
- Ref

-

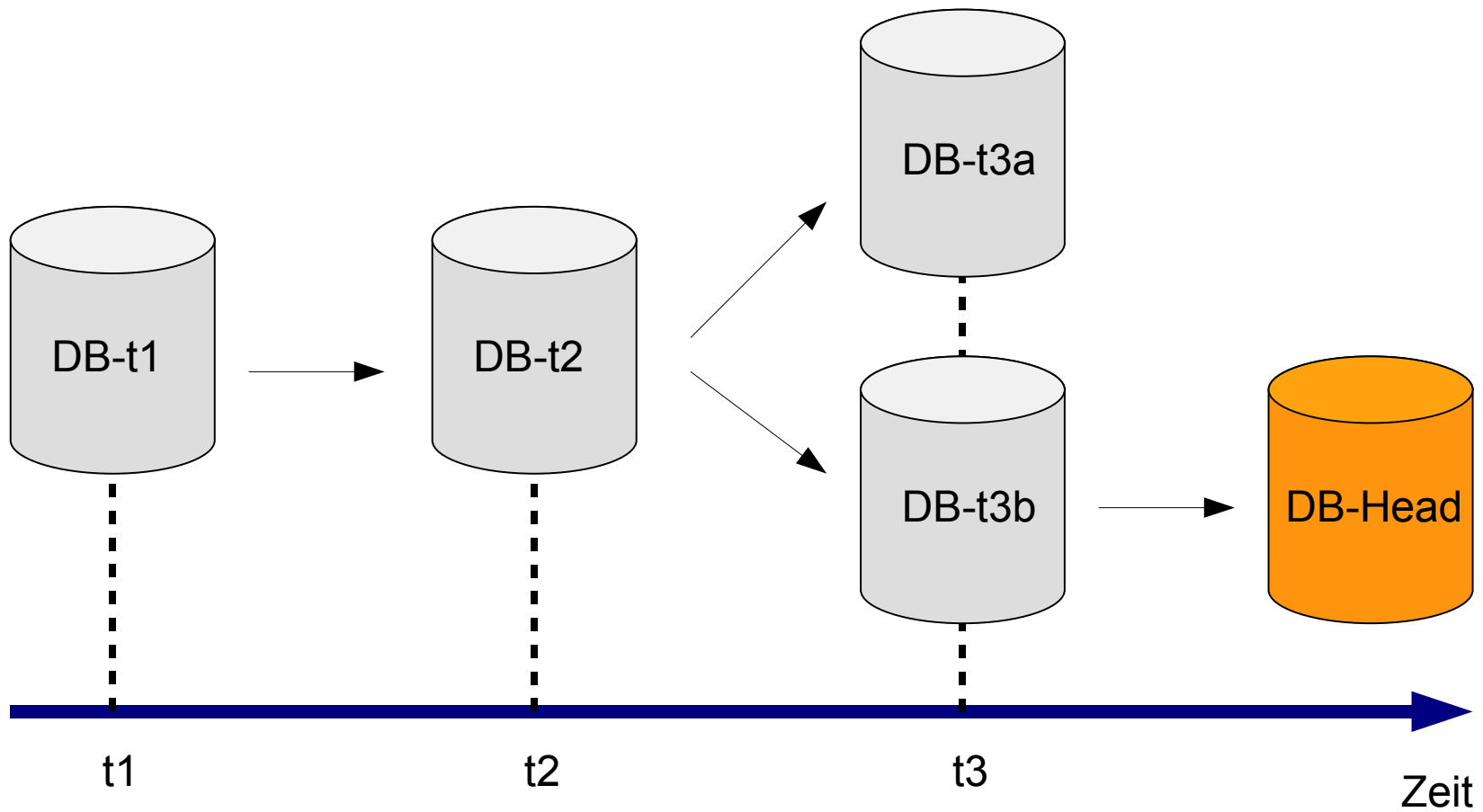
```

<complexType name="EnvelopeWithTimePeriodType">
  <complexContent>
    <extension base="gml:EnvelopeType">
      <sequence>
        <element ref="gml:timePosition" minOccurs="2" maxOccurs="2"/>
      </sequence>
      <attribute name="frame" type="anyURI" use="optional" default="#ISO-8601"/>
    </extension>
  </complexContent>
</complexType>

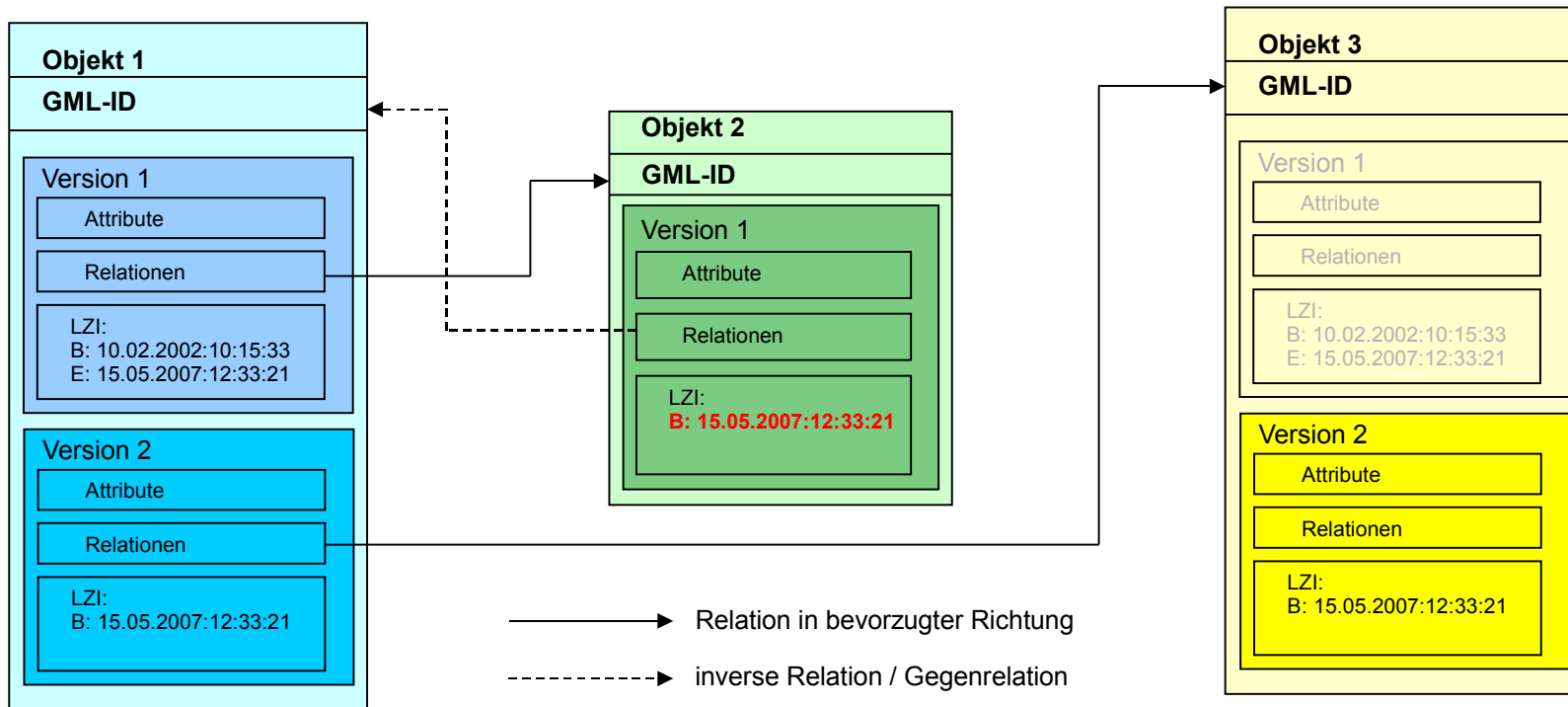
<element name="EnvelopeWithTimePeriod" type="gml:EnvelopeWithTimePeriodType"
  substitutionGroup="gml:Envelope"/>
  
```



- Versionierung über Branch



- Versionierung auf Objektebene



- Redundante Speicherung von Attributen und Relationen.
- Objekt(-container) enthält Versionen des Objektes.
- Relationen zeigen immer von einer Version zu einem Container.
- Jede Version besitzt einen Zeitstempel (Lebenszeitintervall).

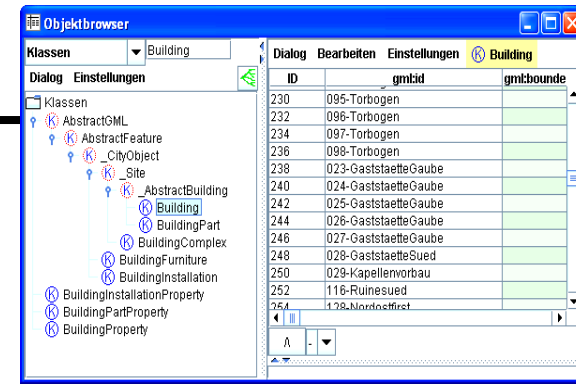
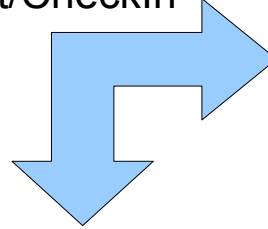
- [Versionierung auf Attributebene](#)

Objekt 1			
Attribut 1	v1_t1	t1_beg	t1_end
	v1_t2	t2_beg	t2_end
	v1_t3	t3_beg	t3_end
	v1_t4	t4_beg	
Attribut 2	v2_t1	t1_beg	t1_end
	v2_t2	t2_beg	
Attribut3	v3_t1	t1_beg	
Attribut 4	v4_t1	t1_beg	t1_end
	v4_t2	t2_beg	t2_end
	v4_t3	t3_beg	

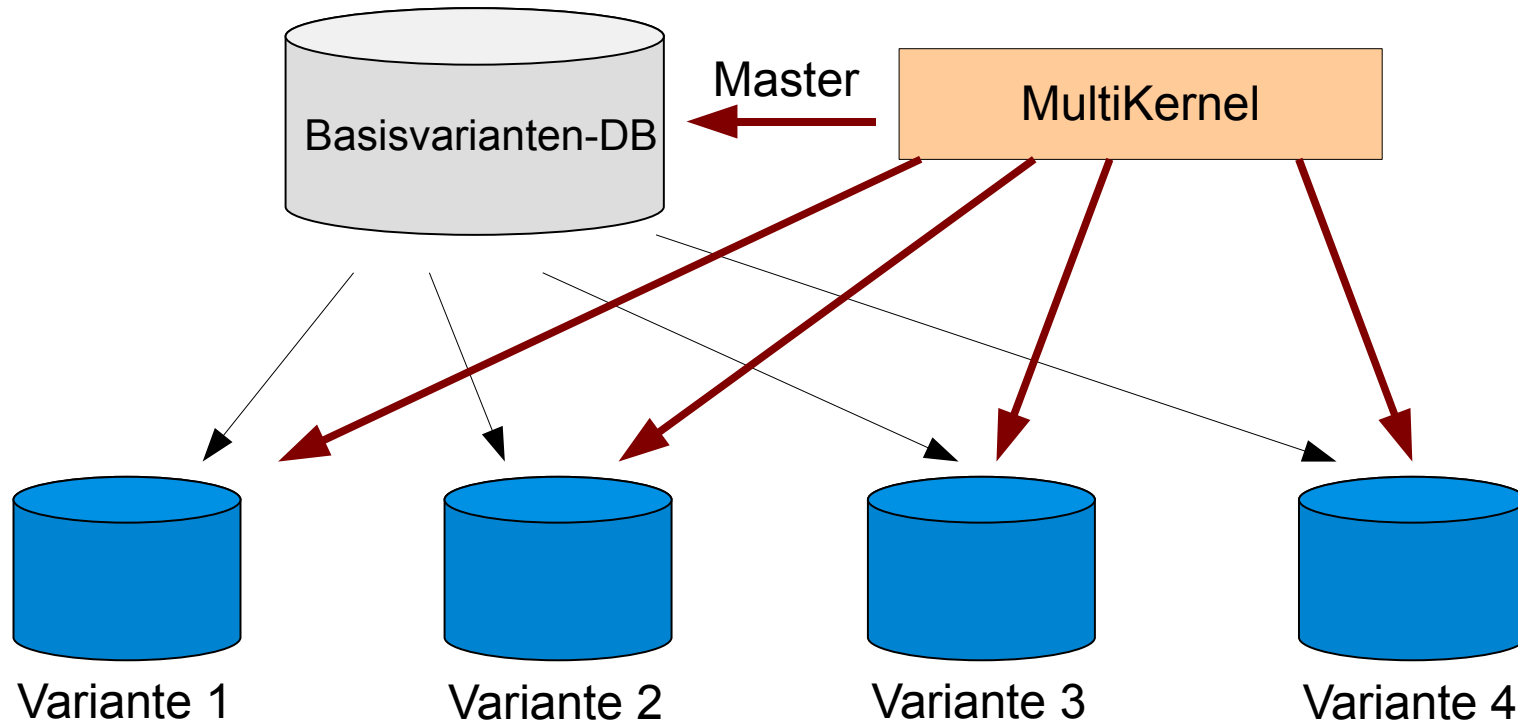
Versionen-Schema

- Varianten

CheckOut/CheckIn



Fortführung



Fragen???

Dr.-Ing. René Thiele
thiele@supportgis.de